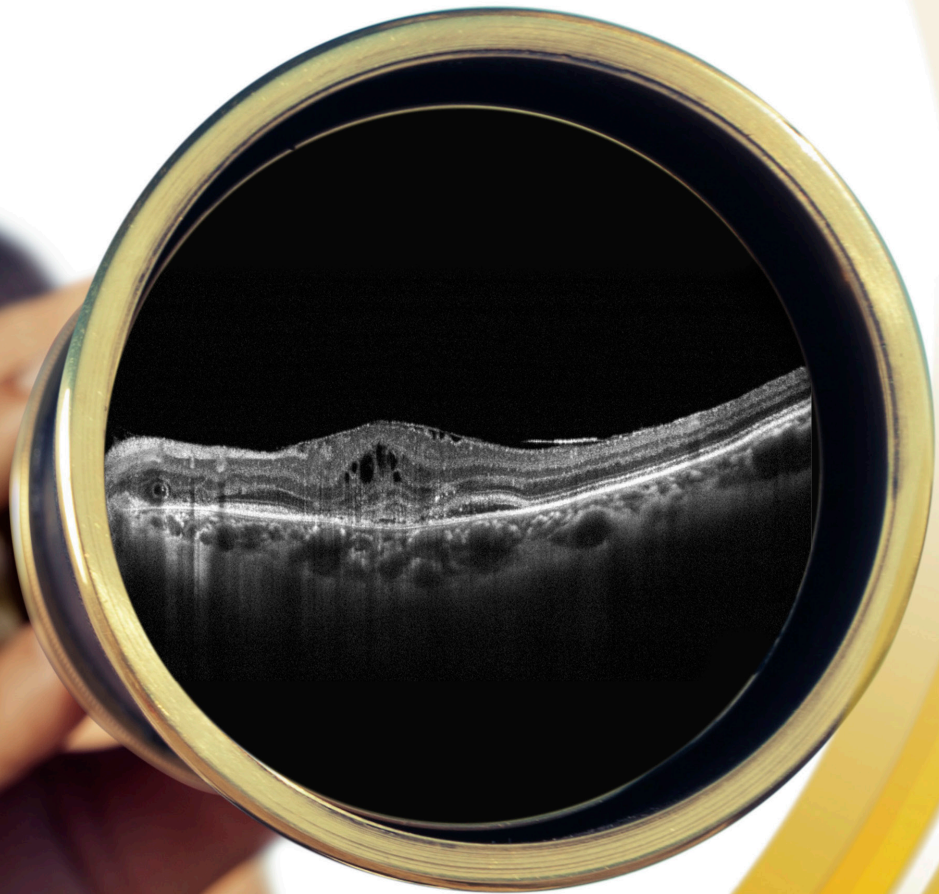




---

Our vision is foresight



**iScan**  
OCT System

## **iScan® OCT**

# The OCT that practically runs itself

Welcome to the world of guided OCT—where advanced scanning is realized in a system so user-friendly it even talks to patients. Meet *iScan*®, the fully integrated OCT that sets the standard for simplicity—perfect for ECPs seeking an affordable OCT entrée. It's ideal for practices with limited staff, since *iScan* delivers consistent scan acquisition with minimal training—and vocally guides patients through an entire exam in any of 12 languages. *iScan* also comes standard with the *iWellnessExam*®, a comprehensive retinal exam that improves patient education and involvement.

Compact and portable, *iScan*'s streamlined design integrates the operator interface, display, patient interface and scan head into one console that can be moved from station to station and mounted on any tabletop. Then comes the easy part—plug in, switch on and start scanning.

### **From Essential to Comprehensive**

*iScan* is available in two configurations: Essential and Comprehensive. *iScan* Essential can be upgraded to *iScan* Comprehensive at any time to enable more advanced diagnostic imaging.

#### ***iScan* Essential capabilities**

- *iWellnessExam*
- Retina mapping
- RFNL and GCC® trend analyses
- FLV% and GLV% analysis to increase GCC sensitivity and specificity

#### ***iScan* Comprehensive capabilities**

*iScan* Comprehensive includes all *iScan* Essential capabilities plus:

- High-density 3D retinal imaging
- In-depth 3D optic nerve head analysis
- Cornea Advance anterior segment imaging and measurement



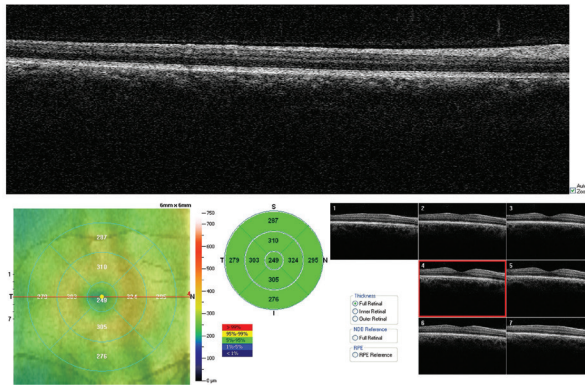


## iScan Essential

### Retinal analysis and 3D imaging

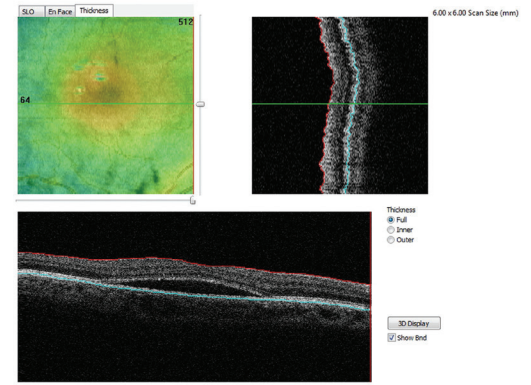
Retinal imaging capabilities include retina mapping with normative comparison and a 3D retina scan with en face presentation, which enables virtual retinal dissection by displaying three different reference planes: ILM, IPL and RPE.

#### Retina Mapping



## iScan Comprehensive

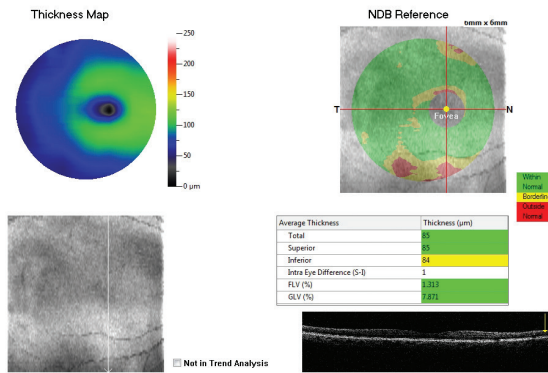
### 3D Retina



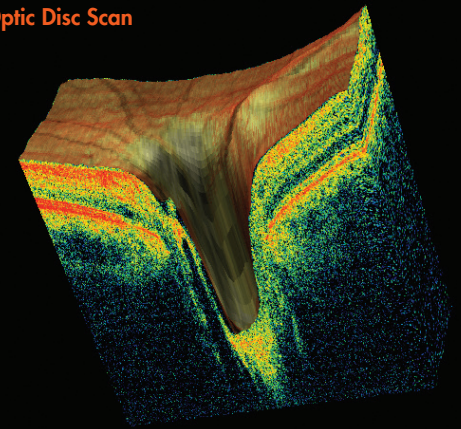
### In-depth 3D optic disc analysis

GCC analysis helps identify ganglion cell loss, which sometimes precedes RNFL loss. 3D disc scan depicts the optic nerve in cross section with the representative thicknesses of selected slices.

#### GCC Single Eye



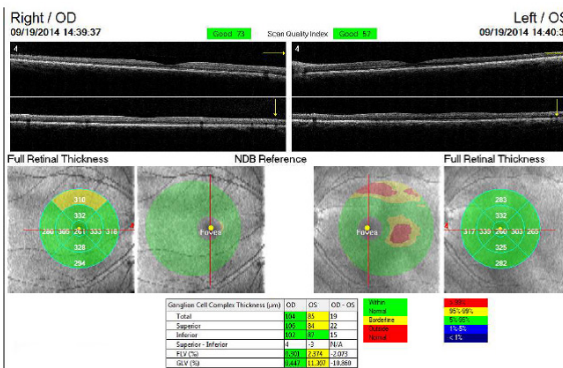
### 3D Optic Disc Scan



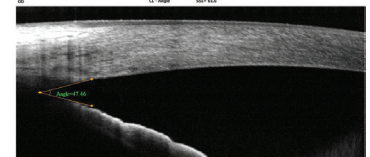
### Additional capabilities

All iScan systems feature Optovue's exclusive iWellnessExam. iScan Comprehensive includes Cornea Advance anterior segment imaging features such as pachymetry mapping and a variety of corneal and angle measurement tools.

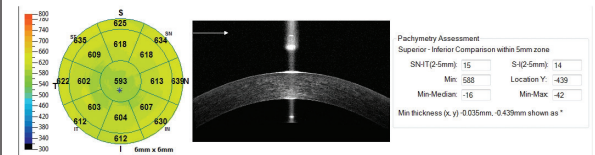
#### iWellnessExam



### Anterior Segment Angle with Measurement



### Pachymetry Map



## iScan specifications

### Scanner

OCT Image	26,000 A-scan/second
Depth Resolution (in tissue)	5.0 µm
Traverse Resolution	15 µm (retina)

### OCT Fundus Image (En Face)

FOV	(H) 21° x (V) 21°
Minimum Pupil Diameter	2.5mm
External Image (Live IR) FOV	13mm x 9mm

### Scan Range

Depth	2 - 2.3mm (retina)
Scan Beam Wavelength	840nm (+/-10nm)

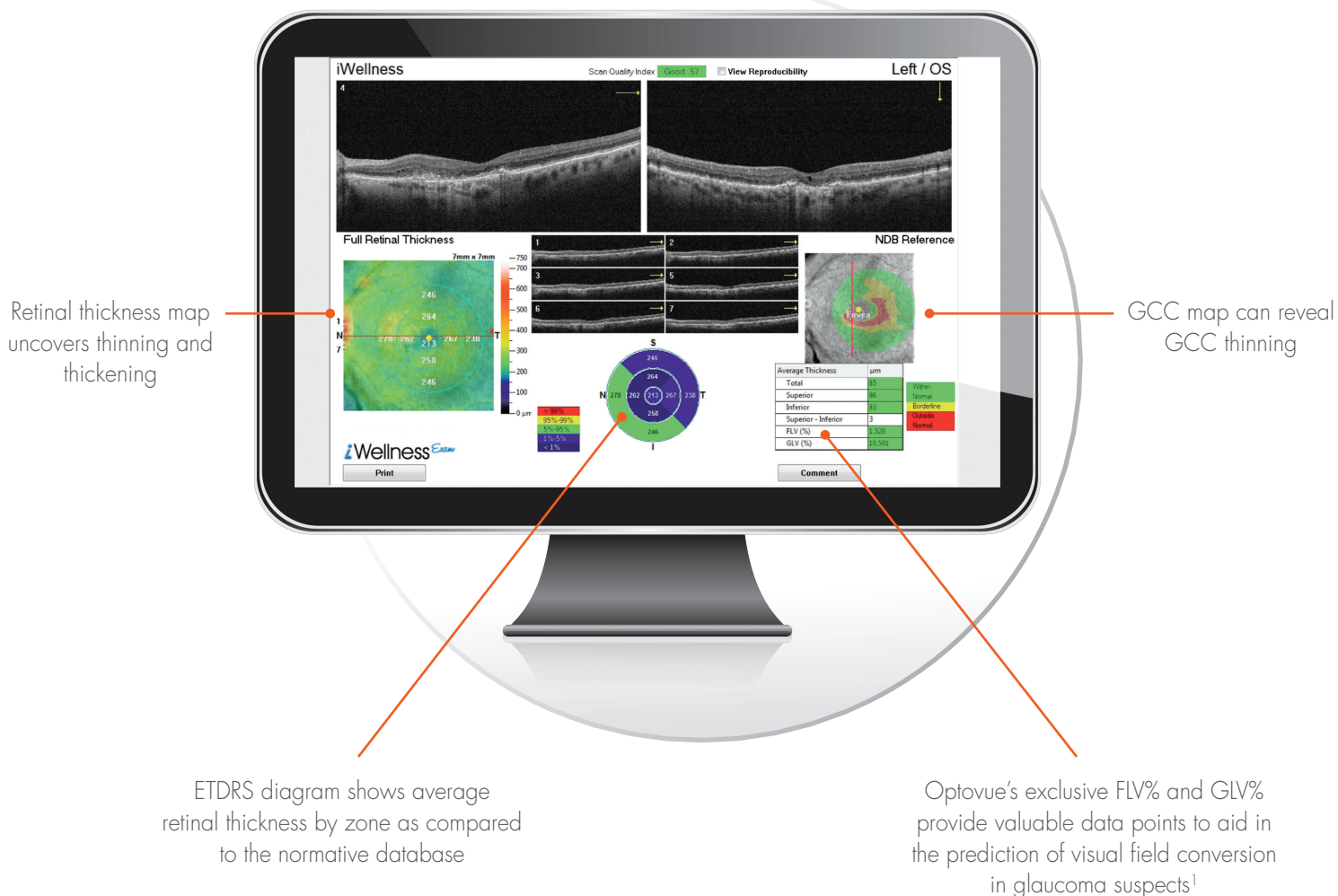
### Size

Dimensions (in.)	(W) 19.81 x (L) 15.83 x (H) 17.82
Weight (lb.)	42.94

# A clear path to patient eye health

The *iWellnessExam*® is an Optovue exclusive that delivers a quick, easy OCT scan to promote better overall patient eye health. Its usefulness stems from a single, comprehensive report that depicts:

- Retinal thickness and GCC thickness with normative comparison
- Symmetry analysis
- FLV% and GLV%, proprietary Optovue GCC metrics that provide important information to aid in ocular disease diagnosis and management
- Eight high-resolution B-scans



## ***iWellnessExam* benefits patients**

Ultimately *iWellness* benefits patients by helping them become more involved in their own eye health. The scanning process is simple and quick, and each patient receives comprehensive, personalized eye health information in an easy-to-understand report.

## ***iWellnessExam* benefits eye care providers**

*iWellness* benefits ECPs by providing a valuable assessment tool that can reveal the need for more extensive imaging. It also streamlines the exam process by quickly confirming normal—or helping you more efficiently diagnose pathology. Optovue’s current *iWellnessExam* users have affirmed that the *iWellnessExam* improves patient involvement, loyalty and retention. This helps you grow and differentiate your eye care practice, while also providing a new revenue stream.

## **Networking solutions**

iScan provides comprehensive networking capabilities for the most effective and efficient OCT utilization. It stems from our NetVue product suite, which empowers you to receive, review and modify images wherever and whenever you choose. Capture new patient scans while existing scans are being reviewed. View and modify images from as many as 20 review stations. Access OCT images from your smart phone, tablet, laptop or desktop. NetVue makes such seamless workflow possible. Naturally iScan is fully DICOM compatible.

## **Networking specifications**

<b>Operating System:</b>	Win 8, Win 7, or Win XP Pro SP2 (32 or 64 bit)
<b>Processor Speed:</b>	2.0 GHz or higher (Quad core—desktop; Dual core—laptop)
<b>Network Bandwidth:</b>	1 Gbps or higher
<b>Computer RAM:</b>	4 GB or higher
<b>Monitor Resolution:</b>	1280 x 1024 at 24-bit color (32-bit recommended)

# Our vision is foresight

Since 2006, Optovue has been a leading provider of OCT technology for ocular diagnostic imaging, having installed more than 10,000 systems on six continents. We remain the only company in the world solely focused on furthering the science, efficacy and clinical application of OCT for enhanced eye health. Not surprisingly, this specialization has yielded a history of OCT patents and firsts.

## Our mission is your success

To unleash the full potential of OCT in your practice, Optovue puts its world-class OCT resource center at your disposal:

- *The Academy at Optovue* brings OCT education to your computer and mobile screens to help you interpret images, understand reports, apply the information to clinical practice—or help your staff become better OCT operators.
- *Best-In-Class Training and Support* starts with professional installation and in-office staff training from your dedicated Optovue clinical applications specialist and goes on to include five years of free phone and online support.
- *Free Software Updates* that improve system usability and efficiency throughout your instrument's operational lifetime are included with every iScan system. Major software upgrades may be available for purchase.

Bottom line, when you invest in iScan, you also secure a valuable OCT practice partner.

## Put Optovue foresight to work in your practice today

For a complimentary practice consultation or iSeries system demonstration call 1.510.623.8868 or visit [optovue.com](http://optovue.com).



Our vision is foresight

2800 Bayview Drive, Fremont, CA 94538 [optovue.com](http://optovue.com)

©2017 Optovue, Inc. iScan, GCC and iWellnessExam are registered trademarks of Optovue, Inc. All rights reserved.

1. Data on file.

300-52534 Rev. A

